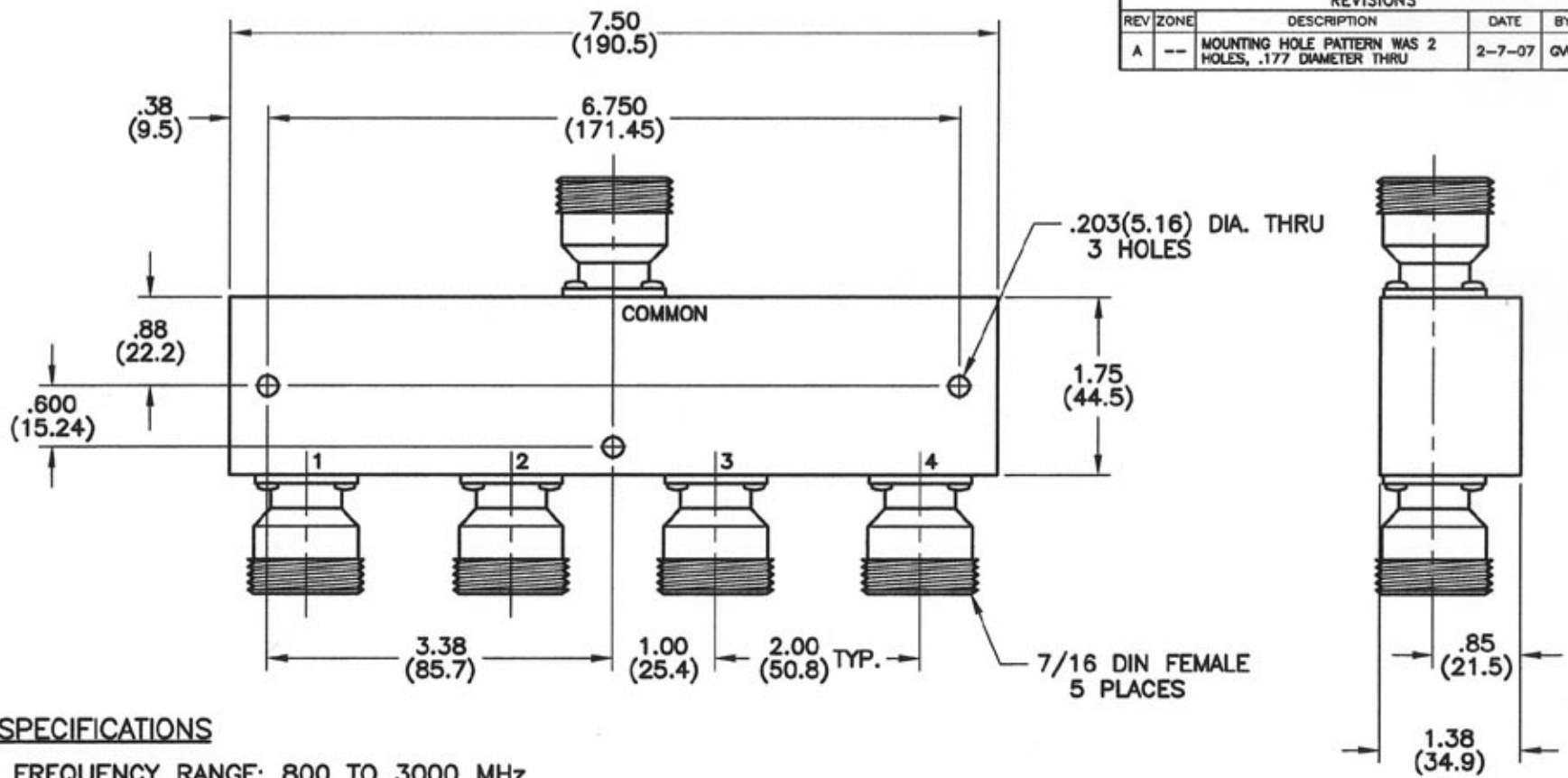


REVISIONS					
REV	ZONE	DESCRIPTION	DATE	BY	ECO
A	--	MOUNTING HOLE PATTERN WAS 2 HOLES, .177 DIAMETER THRU	2-7-07	GVC	--



**SPECIFICATIONS**

FREQUENCY RANGE: 800 TO 3000 MHz  
 INSERTION LOSS: 0.5 dB MAX.  
 ISOLATION: 20 dB MIN.  
 VSWR: INPUT - 1.50:1 TYP.  
 OUTPUT - 1.40:1 TYP.  
 POWER: 30 WATTS AVG. W/ LOAD VSWR  
 1.20:1 MAX.

DIMENSIONS: INCHES (MILLIMETERS)

CONTACT: MICROWAVE DEVICES - 1150 N. GRAHAM RD. FRANKLIN, IN 46131 (317) 736-6833

TOLERANCES		THE INFORMATION CONTAINED IN THIS DOCUMENT IS THE PROPERTY OF MICROWAVE DEVICES, INC. AND IS PROPRIETARY. IT IS NOT TO BE COPIED OR USED FOR ANY PURPOSE OTHER THAN AS INSTRUCTED, IN WRITING, BY MICROWAVE DEVICES, INC.
DEC.XX ± .03	FRAC ±	
XXX ± .010	ANG ±	
MATERIAL		
SIGNATURES		DATE
DR	G.V. Cothron	3-10-08
CHK		
APPD		
APPD		

**MICROWAVE DEVICES**  
 RF and Microwave Components

**OUTLINE, POWER DIVIDER  
 MODEL 4PD1.9D7**

CAGE 60674 B SIZE B DRAWING NO. 900513

DRAWING SCALE 1=1 SHEET 1 OF 1