

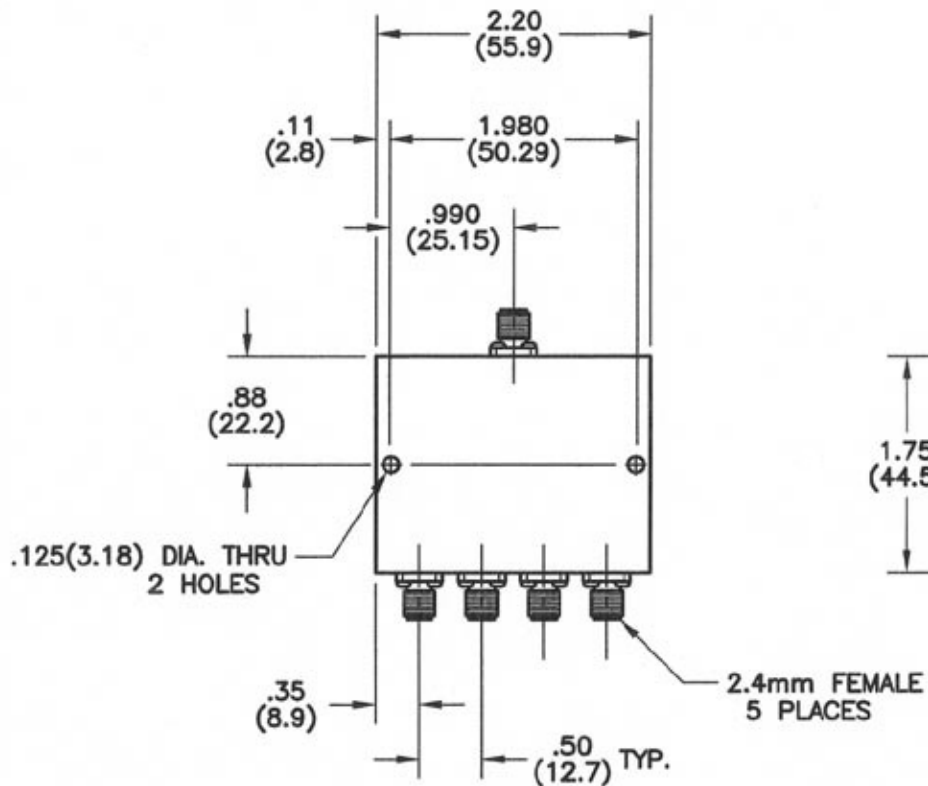
4

3

2

1

REVISIONS					
REV	ZONE	DESCRIPTION	DATE	BY	ECO



SPECIFICATIONS:

FREQUENCY RANGE: 18.0 - 26.5 GHz

INSERTION LOSS: 1.8 dB MAX.

ISOLATION: 16 dB MIN.

VSWR (COMMON PORT): 1.70:1 MAX.

VSWR (OUTPUT PORTS): 1.70:1 MAX.

POWER RATING: 10 WATTS AVG., WITH LOAD
VSWR OF 1.20:1 MIN.

DIMENSIONS: INCHES
(MILLIMETERS)

TOLERANCES		THE INFORMATION CONTAINED IN THIS DOCUMENT IS THE PROPERTY OF MICROWAVE DEVICES, INC. AND IS PROPRIETARY. IT IS NOT TO BE COPIED OR USED FOR ANY PURPOSE OTHER THAN AS INSTRUCTED, IN WRITING, BY MICROWAVE DEVICES, INC.	SIGNATURES		DATE
DEC.XX ± .03	FRAC ±		DR	G.V.Cothren	2-19-07
.XXX ± .010	ANG ±		CHK		
MATERIAL			APPD		
FINISH		APPD			

Microwave Devices
RF and Microwave Components

OUTLINE, 4PD22.25-24
4 WAY POWER DIVIDER

CAGE	SIZE	DRAWING NO.	
60674	B	900650-3	
DRAWING SCALE 1=1		SHEET 1 OF 1	

CONTACT: MICROWAVE DEVICES - 1150 N. GRAHAM RD.
FRANKLIN, IN 46131 (317) 736-8833

DIMENSIONS ARE IN INCHES UNLESS OTHERWISE SPECIFIED.

4

3

2

1